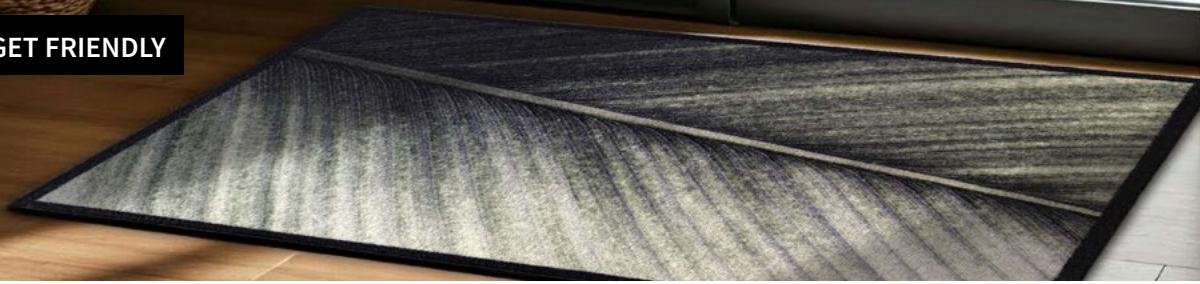


✓ MOST DETAILED PRINT QUALITY

✓ BUDGET FRIENDLY

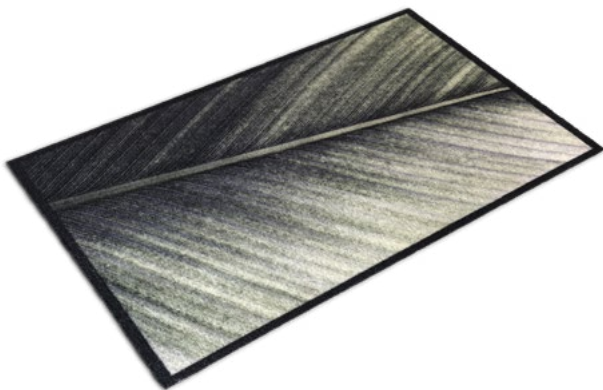


DELTA UP // Delta without borders



SPECIFICATIONS

MANUFACTURING PROCESS FABRICAGEMETHODE TECHNIQUE DE FABRICATION HERSTELLUNGSART	TUFT, 1/10" CUT-PILE
PILE COMPOSITION POOLSAMENSTELLING NATURE DU VELOURS POLMATERIAL	100% PA BCF
BACKING RUGTYPE ENVERS RÜCKEN	BLACK STANDARD VINYL (UP)
PILE WEIGHT POOLINZETGEWICHT POIDS MIS EN ŒUVRE POLEINSATZGEWICHT	± 300 GR/M²
PILE HEIGHT POOLHOOGTE HAUTEUR DU VELOURS POLHÖHE	± 3 MM
FINISHING AFWERKING FINITION FERTIGUNG	FINISHED WITHOUT VINYL BORDERS (OPTICAL BORDERS POSSIBLE)
WASHABLE WASBAAR LAVABLE WASCHBAR	30°
COLOURS & DESIGN KLEUREN & DESSIN COULEURS & DESSIN FARBEN & ENTWURF	ANY DESIGN, ANY COLOUR POSSIBLE (WITH PREFERENCE PANTONE-REFS)

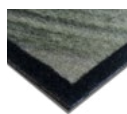


SIZES

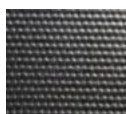
MATS & CARPETS - RECTANGLE (IN CM)
39x58 | 50x75 | 50x120 | 50x150 | 67x120 | 67x150 | 67x170 |
100x150 | 100x200 | 200x150

RUNNERS - RECTANGLE
100 CM x 20 LM | 200 CM x 20 LM

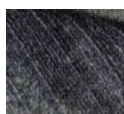
OTHER SHAPES & SIZES
UPON DEMAND; ALL WITHIN 200 CM WIDTH AND 20 LM



SIDEVIEW



BACKING



PILE TEXTURE



EMPIRE CARPETS INTERNATIONAL NV | BRUGSESTRAAT 140 | 8531 HULSTE | BELGIUM
WWW.EMPIRE.BE | T +32 (0)56 20 67 07 | F +32 (0)56 20 67 09 | SALES@EMPIRE.BE

Our general terms and conditions of sales are valid at all times - V2022-001 --- dd.05-2022. Data can be subject to change.