

✓ SOFT FEELING

✓ HIGH ABSORPTION RATE



FLAIR PR // Flair with borders



SPECIFICATIONS

MANUFACTURING PROCESS

FABRICAGEMETHODE | TECHNIQUE DE FABRICATION | HERSTELLUNGSART

TUFT, 1/8" CUT-PILE

PILE COMPOSITION

POOLSAMENSTELLING | NATURE DU VELOURS | POLMATERIAL

100% PA SOFT HEAT-SET

BACKING

RUGTYPE | ENVERS | RÜCKEN

BLACK ELASTO-FLEX-VINYL (PR)

PILE WEIGHT

POOLINZETGEWICHT | POIDS MIS EN ŒUVRE | POLEINSATZGEWICHT

± 600 GR/M²

PILE HEIGHT

POOLHOOGTE | HAUTEUR DU VELOURS | POLHÖHE

± 5 MM

FINISHING

AFWERKING | FINITION | FERTIGUNG

FINISHED WITH VINYL BORDERS

(± 1,5 CM)

WASHABLE

WASBAAR | LAVABLE | WASCHBAR



COLOURS & DESIGN

KLEUREN & DESSIN | COULEURS & DESSIN | FARBEN & ENTWURF

ANY DESIGN, ANY COLOUR POSSIBLE

(WITH PREFERENCE PANTONE-REFS)



SIZES

MATS & CARPETS - RECTANGLE (IN CM)

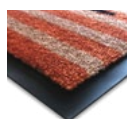
39x58 | 45x75 | 58x78 | 58x180 | 75x50 | 75x120 | 78x150
100x150 | 100x200 | 200x150

RUNNERS - RECTANGLE

100 CM x 15 LM | 200 CM x 15 LM

OTHER SHAPES & SIZES

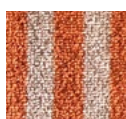
UPON DEMAND; ALL WITHIN 210 CM WIDTH (INCLUDING THE BORDERS) AND 20 LM



SIDEVIEW



BACKING



PILE TEXTURE

